

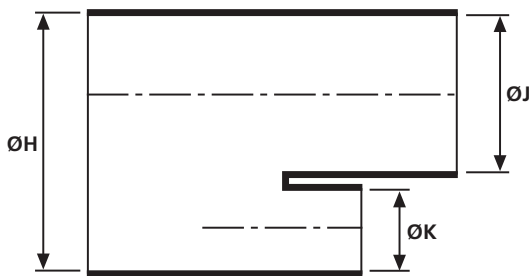
T-Shapes, VG style

• Helashrink 1200 Series

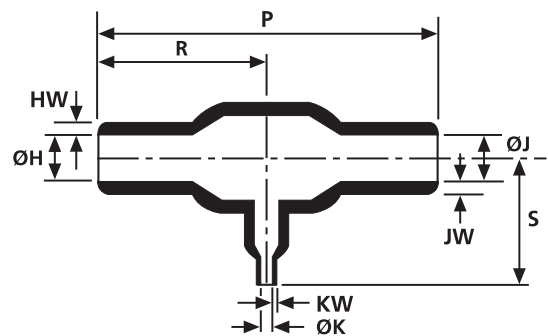
This style provides strain relief, sealing and mechanical protection on cable harnesses. For VG shapes with portholes "P" please refer to product standards tables in the appendix.



1202-1-G recovered onto a cable harness.



a: Expanded form (supplied)



b: Fully recovered form (after heating)

Sizes and Type Table

Type	Designation as per VG-Norm	ØH/J min. a	ØH/J max. b	ØK min. a	ØK max. b	P ± 10%	R ± 10%	HW ± 20%	JW ± 20%	S ± 10%	KW ± 20%
1206-1	VG95343T08A009A	6.6	3.0	6.6	3.0	29.7	14.7	1.0	1.0	14.7	1.0
1203-1	VG95343T08A001A	13.2	6.0	6.5	3.0	52.0	26.0	1.5	1.5	19.3	1.0
1202-1	VG95343T08A010A	13.2	6.1	13.2	6.1	58.7	29.2	1.5	1.5	29.2	1.5
1205-1	-	17.7	8.9	7.6	3.8	50.8	25.4	1.5	1.5	25.4	1.0
1201-1	VG95343T08A007A	17.7	8.9	10.1	5.1	47.5	23.6	1.5	1.5	23.6	1.0
1209-1	VG95343T08A002A	27.0	12.4	13.2	6.0	108.0	54.0	2.5	2.5	38.6	1.5
1207-1	VG95343T08A011A	26.9	12.4	26.9	12.4	120.1	55.9	2.5	2.5	59.9	2.5
1203-1	-	13.0	6.0	6.5	3.0	52.0	26.0	1.5	1.5	19.3	1.0

All dimensions in mm. Subject to technical changes.

For Material / Adhesive selection and other information please refer to page 10.

Combinations "On request"

Adhesive	Material				
	B7	G	J	H	L
WM250	√	√	√	√	-
W8	√	√	√	√	-
W24	√	√	√	√	√
V9500	√	√	√	√	-
HMT200A	√	√	√	√	-
W21	-	-	-	√	-
Without Adhesive	√	√	√	√	√

Standard combinations

Article-No.	Type
412-06180	1206-1-G
412-03180	1203-1-G
412-02180	1202-1-G
412-05180	1205-1-G
412-01180	1201-1-G
412-09180	1209-1-G
412-07180	1207-1-G
412-03001	1203-1-B7

T-Shapes

• Helashrink 1200 Series, Offset

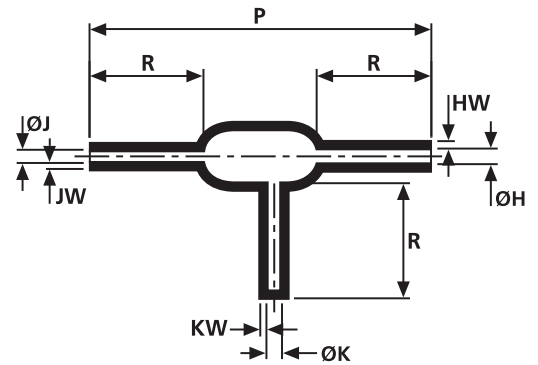
This style provides strain relief, sealing and mechanical protection where a cable transition is required on the harness, it is recommended that an adhesive be used if environmental sealing is required.



1217-1 supplied / fully recovered.



a: Expanded form (supplied)



b: Fully recovered form (after heating)

Sizes and Type Table											
Type	ØH min. a	ØH max. b	ØJ min. a	ØJ max. b	ØK min. a	ØK max. b	P ± 10%	R ± 10%	HW ± 20%	JW ± 20%	KW ± 20%
1217-1	10.0	2.6	6.0	2.2	6.0	2.6	57.0	19.0	1.0	1.0	1.0
1222-1	31.0	15.2	18.0	8.9	25.0	15.0	92.0	52.0	2.3	1.8	2.3
1223-1	29.5	16.3	9.6	5.3	29.5	16.3	93.2	56.6	2.5	1.8	2.5

All dimensions in mm. Subject to technical changes.

Combinations "On request"					
Adhesive	Material				
	B7	G	J	H	L
WM250	√	√	√	√	-
W8	√	√	√	√	-
W24	√	√	√	√	√
V9500	√	√	√	√	-
HMT200A	√	√	√	√	-
W21	-	-	-	√	-
Without Adhesive	√	√	√	√	√

Standard combinations	
Article-No.	Type
412-17003	1217-1-G
412-22002	1222-1-G
412-23003	1223-1-HP

T-Shapes, VG style

• Helashrink 1200 Series, Offset

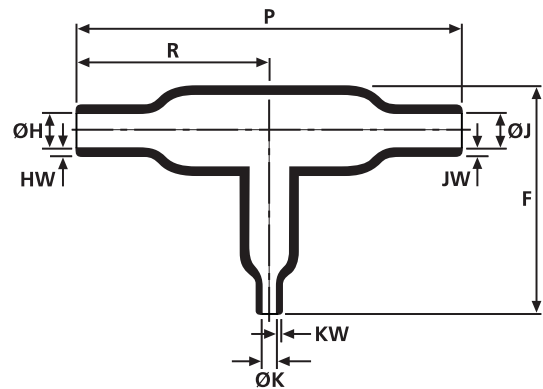
This style provides strain relief, sealing and mechanical protection where a cable transition is required on the harness, it is recommended that an adhesive be used if environmental sealing is required.



1204-1 supplied / fully recovered.



a: Expanded form (supplied)



b: Fully recovered form (after heating)

Sizes and Type Table														
Type	Designation as per VG-Norm	ØH min. a	ØH max. b	ØJ min. a	ØJ max. b	ØK min. a	ØK max. b	P ± 10%	R ± 10%	HW ± 20%	JW ± 20%	KW ± 20%	S ± 10%	F ± 15%
1204-1	VG95343T08A016A	13.0	7.5	6.5	4.0	6.5	4.0	56.0	33.0	1.5	1.0	1.0	-	27.0
1216-1	VG95343T08A017A	33.0	13.0	16.5	6.5	16.5	6.5	97.0	54.0	2.5	1.5	1.5	38.5	-
1226-1	-	30.5	15.2	17.8	8.9	17.8	8.9	81.3	47.5	2.3	1.3	1.3	38.1	-

All dimensions in mm. Subject to technical changes.

For Material / Adhesive selection and other information please refer to page 10.

Combinations "On request"					
Adhesive	Material				
	B7	G	J	H	L
WM250	√	√	√	√	-
W8	√	√	√	√	-
W24	√	√	√	√	√
V9500	√	√	√	√	-
HMT200A	√	√	√	√	-
W21	-	-	-	√	-
Without Adhesive	√	√	√	√	√

Standard combinations	
Article-No.	Type
412-04180	1204-1-G
412-16180	1216-1-G
412-26002	1226-1-G