

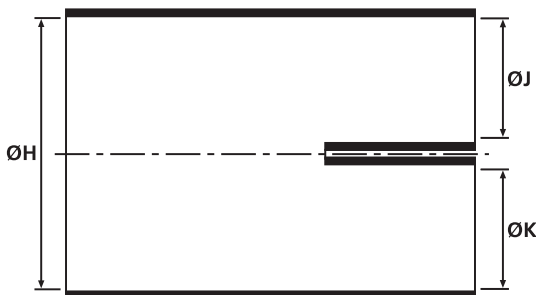
### 2-Way Outlet Shapes

- Helashrink 200 Series, low profile

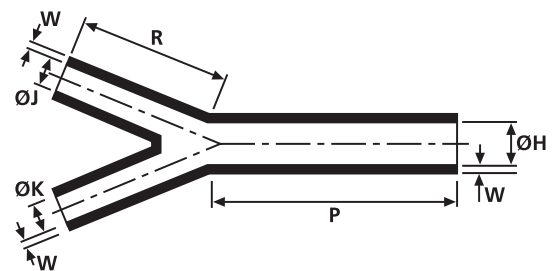
Branching parts are employed for mechanical tension relief in harnesses, where multi core cables are required to be routed out in different directions. High ratio expansion allows for quick and easy installation times.



203-1-G supplied / fully recovered.



a: Expanded form (supplied)



b: Fully recovered form (after heating)

For Material / Adhesive selection and other information please refer to page 10.

Sizes and Type Table

Type	ØH min. a	ØH max. b	ØJ min. a	ØJ max. b	ØK min. a	ØK max. b	P ± 10%	R ± 10%	W ± 20%
201-1	19.0	9.4	6.4	14.0	6.4	14.0	50.8	30.5	1.5
201-3	24.5	9.4	14.0	6.4	14.0	6.4	50.8	30.5	1.5
202-1	19.0	9.4	7.6	3.8	7.6	3.8	50.8	30.5	1.5
202-2	20.0	9.4	12.5	3.8	12.5	3.8	50.8	30.5	1.5
202-3	24.5	9.4	16.0	3.8	16.0	3.8	50.8	30.5	1.5

All dimensions in mm. Subject to technical changes.

Combinations "On request"

Adhesive	Material				
	B7	G	J	H	B8
WM250	√	√	√	√	√
W8	√	√	√	√	-
W24	√	√	√	√	-
V9500	√	√	√	-	-
HMT200A	√	√	√	-	√
W21	-	-	-	-	-
Without Adhesive	√	√	√	√	√

Standard combinations

Article-No.	Type
402-01180	201-1-G
402-01020	201-3-G
402-02004	202-1-G
402-02011	202-2-G
402-02019	202-3-G

## 2-Way Outlet Shapes, VG style

### • Helashrink 200 Series

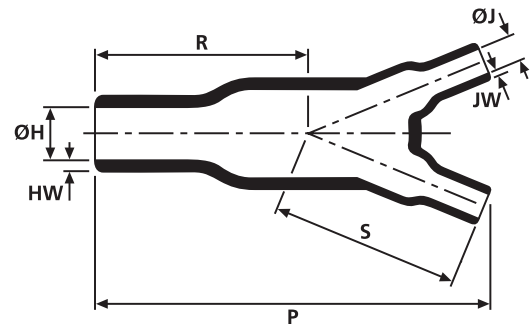
Branching parts are employed for mechanical tension relief in cable harnesses. For VG shapes with portholes "P" please refer to product standards tables in the appendix.



203-1-G supplied / fully recovered.



a: Expanded form (supplied)



b: Fully recovered form (after heating)

Sizes and Type Table

Type	Designation as per VG-Norm	ØH	ØH	ØJ	ØJ	P	R	HW	JW	S
		min. a	max. b	min. a	max. b	± 10%	± 10%	± 20%	nom	nom
206-1	VG95343T08C001A	13.0	6.0	7.0	3.0	41.0	19.0	1.5	1.0	19.0
213-1	–	17.3	7.9	11.1	7.9	140.0	83.1	2.3	1.0	64.0
213-2	–	40.0	8.5	31.8	7.9	140.0	83.1	2.3	2.3	64.0
212-1	VG95343T08C005A	14.5	8.0	8.5	5.5	136.0	83.0	2.3	2.0	63.0
203-1	VG95343T08C002A	27.0	12.0	13.0	6.0	80.0	43.0	2.5	1.5	43.0
204-1	VG95343T08C003A	39.0	18.0	27.0	12.0	131.0	81.0	3.1	2.0	81.0

All dimensions in mm. Subject to technical changes.

Combinations "On request"

Adhesive	Material				
	B7	G	J	H	L
WM250	√	√	√	√	-
W8	√	√	√	√	-
W24	√	√	√	√	√
V9500	√	√	√	-	-
HMT200A	√	√	√	-	-
W21	-	-	-	√	-
Without Adhesive	√	√	√	√	√

Standard combinations

Article-No.	Type
402-06180	206-1-G
402-13180	213-1-G
402-13021	213-2-G
402-12180	212-1-G
402-03180	203-1-G
402-04180	204-1-G

### 2-Way Outlet Shapes, Breakout Boots

- Helashrink 200 Series, in line, low voltage

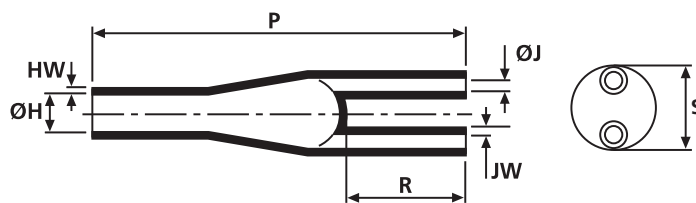
Branching parts are used for easy, time-saving insulation of the branch point of a cable where it is split into single wires. Branching parts with hot melt adhesive also serve to relieve the mechanical tension in cable harnesses.



223-2 supplied / fully recovered.



a: Expanded form (supplied)



b: Fully recovered form (after heating)

Cable breakouts are available for 2, 3, 4, 5 and 6 core cables.

For Material / Adhesive selection and other information please refer to page 10.

Sizes and Type Table									
Type	ØH min. a	ØH max. b	ØJ min. a	ØJ max. b	P ± 10%	R ± 10%	HW ± 20%	JW ± 20%	S nom
223-2	33.0	9.4	17.5	4.1	94.0	30.0	1.5	1.2	20.0
216-2	28.0	9.4	12.0	2.8	76.5	20.0	1.6	1.6	-
217-2	31.0	15.2	13.0	4.3	99.5	28.5	2.2	2.2	-
218-2	49.0	22.9	20.0	7.6	119.0	34.0	3.2	3.2	-
220-1	50.0	28.0	23.0	8.0	175.0	100.0	2.5	2.0	33.0
219-2	77.0	38.1	37.0	12.7	141.5	42.5	3.8	3.8	44.0

All dimensions in mm. Subject to technical changes.

Combinations "On request"				
Adhesive	Material			
	B7	G	H	B8
W	√	√	√	√
W2	√	√	√	√
V9500	√	√	√	-
HMT200A	√	√	√	√
W21	-	-	√	-
Without Adhesive	√	√	√	√

Standard combinations	
Article-No.	Type
402-23058	223-2-B8W
402-16038	216-2-B7WM250
402-17014	217-2-B7
402-18020	218-2-B7
402-20008	220-1-B7
402-19020	219-2-B8